



Lovegrove Way, London, N20 0EU

Per Calendar Month £3,250 Per Calendar Month Council Tax Band G

**REAL ESTATES**  
Est.1981

Estate Agents · Residential Sales · Investments · Lettings

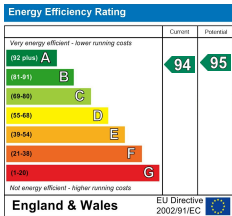
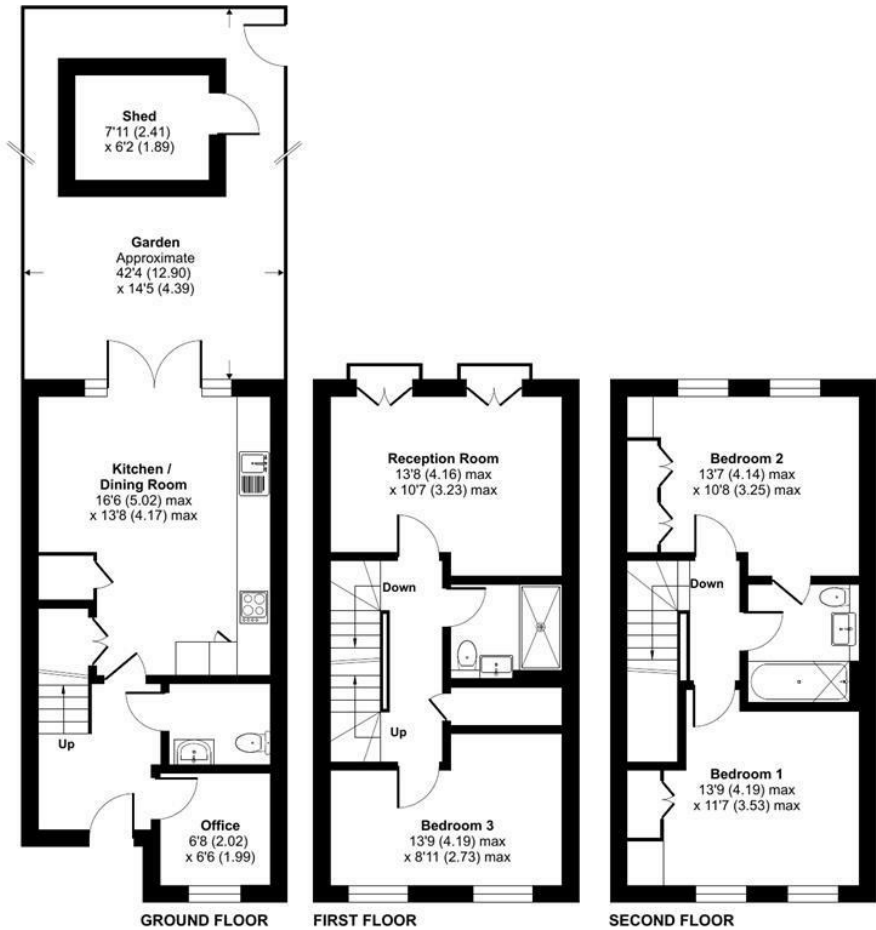


**\*AVAILABLE 30TH MARCH\*** Modern three-bedroom townhouse arranged over three floors, offering stylish and flexible living ideal for families or professionals. The property features a bright open-plan living area, contemporary kitchen with integrated appliances, a separate office space, and two and a half sleek bathrooms. Bi-fold doors open onto a private garden, perfect for outdoor entertaining, and allocated parking is included.

Set within the peaceful Oakleigh Grove development, the property benefits from well-maintained communal gardens and is conveniently located close to local shops, cafés, restaurants, and excellent transport links, including easy access to Whetstone Station.

### Lovegrove Way, London, N20

Approximate Area = 1171 sq ft / 108.7 sq m  
 Outbuilding = 49 sq ft / 4.5 sq m  
 Total = 1220 sq ft / 113.2 sq m  
 For identification only - Not to scale



Floor plan produced in accordance with RICS Property Measurement 2nd Edition, Incorporating International Property Measurement Standards (IPMS2 Residential). © richcom 2026. Produced for Real Estates. REF: 1400268